

CHANGE A TIRE OR TUBE (SOLID FRAME)

Time: 15 min.

The following steps will describe the proper procedure for changing a damaged tire and/or tube on a solid frame.

Tools:

- Screwdriver for Top Plate Screws
- Electrical tape
- Utility Knife
- 4mm Hex Driver Tool
- Medium Strength Thread-Locker (Optional)

Do I have the right SBU style?

These steps apply only to the SBU with a solid frame. If you have a newer style frame please consult the instructional titled, "Change a Tire / Tube (Split Frame)". The solid frame is shown in the photo below on the right.



Remove Hardware

1. Power the SBU OFF and LOCK the SBU.



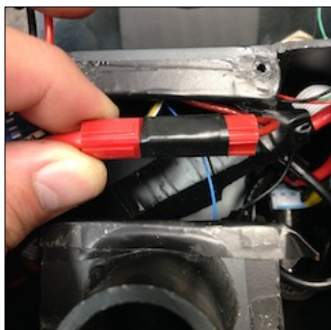
2. Loosen the quick-release clamp and remove seat.
3. Remove the 4 Top Plate Screws.
4. Remove Lower 8 Foot peg Screws.



Remove Battery

5. Place the SBU firmly on the ground, with the frame secured safely.

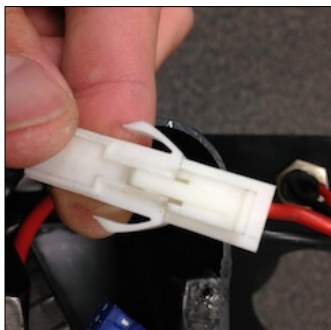
6. Disconnect Battery Power Connector (Red).



7. Disconnect Top Plate Power Switch Connector (Black).



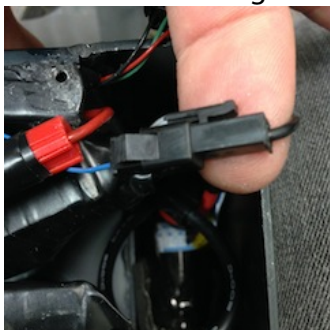
8. Disconnect Top Plate Charger Port Connector (White).



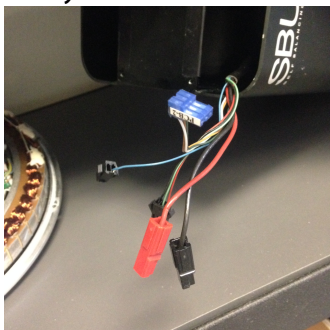
9. Disconnect Battery Ground Connector (Black).



10. Disconnect BMS Signal Connector (Black).

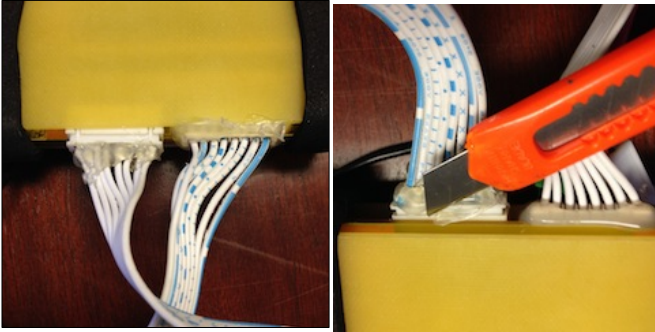


29. Pull out the motor cable so you can move the battery freely.



11. VERY CAREFULLY remove one of the BMS Ribbon Cables (White Connector). Use the side without the hot glue

connecting it. If both sides have glue then carefully use a knife to remove the hot glue.



12. Remove BMS Ground Connector (Black).



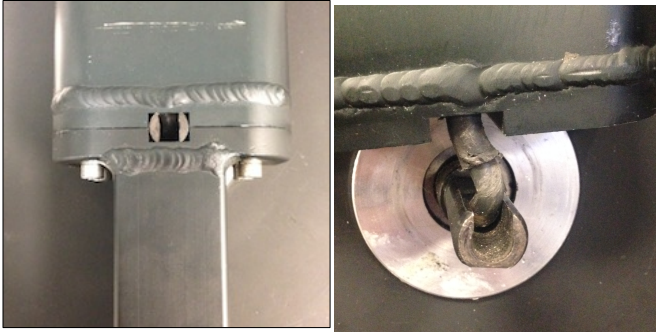
13. Remove Battery Half Connector (Green).



14. Remove battery by carefully sliding battery out of each side of the frame

Slightly Separate Motor from Frame

15. Slightly separate the Frame from the Motor. Note that the motor has an “up” position and a “down” position. The wire should be coming out of the shaft in the “up” position when the SBU is standing. See photo below.



Remove Tire and Tube

16. Deflate the tire completely.
17. Use two tire levers to remove the tire. You can purchase these at your local bike/outdoor store. Ease one lever in under the wheel rim and pry out the edge of the tire. Take great care not to puncture the inner tube if you are only replacing the tire.



Install new Tire and Tube

18. Ease the new partially-inflated tube into the new tire.

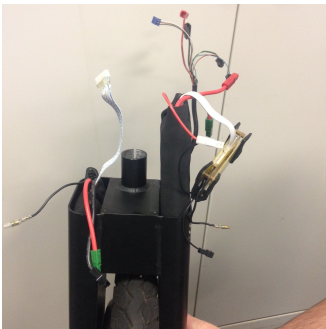
19. Checking the direction of the tire's direction, insert the valve stem into the hole of the rim.



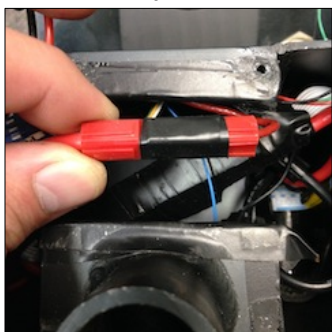
20. Use your hands to ease the tire into the rim. Gently use the tire lever if necessary.
21. Before inflating, use your thumbs to ease the tire from the rim all around the circumference. Make sure the tire is not pinching any part of the tube against the rim. When you inflate the tube, if it is pinching, it will pop.
22. Inflate the tube slowly and carefully at first, all the time checking to make sure the tire is seated evenly on the rim and there is no "pinching".

Reinstall Battery and Electronics

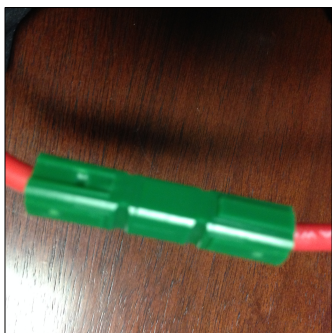
34. Insert Battery into SBU Frame with Charger Port on the left side of frame.



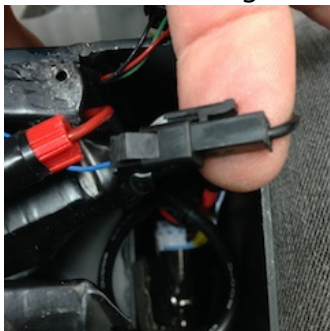
35. Reconnect Battery Positive Connector (Red) Replace electrical tape around connector.



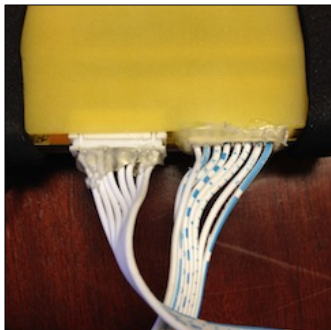
36. Reconnect Battery Half Connector (Green). Replace electrical tape around connector.



37. Reconnect BMS Signal Wire Connector (Black).



38. Reconnect BMS Ribbon Cable Connector (White).



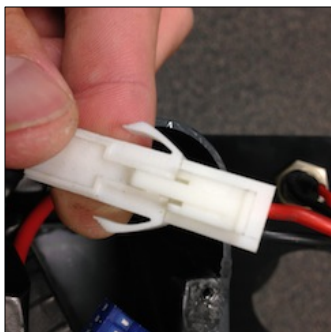
39. Reconnect BMS Ground Connector (Black).



40. Reconnect Top Plate Power Switch Connector (Black).



41. Reconnect Top Plate Charging Port Connector (White).

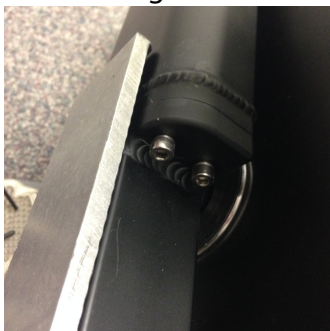


42. Reconnect the Battery Ground Connector (Black).



Reinstall Hardware

43. Replace the bottom 8 Lower Foot Peg Screws. Be certain the cable side of the shaft is on the LEFT side of frame while facing forward direction on Frame.



44. Apply medium strength Thread Lock (Optional).



45. Replace the 4 Top Plate Screws.
46. Unlock Power Override.



47. Press LED Power Button to ensure all connections are tested.
48. Replace the seat and clamp it down.